



NCKX4 Polyclonal Antibody

Catalog No	YP-Ab-16480
Isotype	IgG
Reactivity	Human;Mouse;Rat
Applications	WB;ELISA
Gene Name	SLC24A4
Protein Name	Sodium/potassium/calcium exchanger 4
Immunogen	The antiserum was produced against synthesized peptide derived from human SLC24A4. AA range:328-377
Specificity	NCKX4 Polyclonal Antibody detects endogenous levels of NCKX4 protein.
Formulation	Liquid in PBS containing 50% glycerol, 0.5% BSA and 0.02% sodium azide.
Source	Polyclonal, Rabbit,IgG
Purification	The antibody was affinity-purified from rabbit antiserum by affinity-chromatography using epitope-specific immunogen.
Dilution	Western Blot: 1/500 - 1/2000. ELISA: 1/40000. Not yet tested in other applications.
Concentration	1 mg/ml
Purity	≥90%
Storage Stability	-20°C/1 year
Synonyms	SLC24A4; NCKX4; Sodium/potassium/calcium exchanger 4; Na(+)/K(+)/Ca(2+)-exchange protein 4; Solute carrier family 24 member 4
Observed Band	60kD
Cell Pathway	Cell membrane ; Multi-pass membrane protein . Cytoplasm .
Tissue Specificity	Expressed abundantly in all regions of the brain, aorta, lung and thymus (PubMed:12379639). Expressed at lower levels in the stomach and intestine (PubMed:12379639).
Function	caution:The sequence shown here is derived from an Ensembl automatic analysis pipeline and should be considered as preliminary data.,function:Transports 1 Ca(2+) and 1 K(+) in exchange for 4 Na(+).,polymorphism:Genetic variations in SLC24A4 are associated with skin/hair/eye pigmentation type 6 (SHEP6) [MIM:210750]. Hair, eye and skin pigmentation are among the most visible examples of human phenotypic variation, with a broad normal range that is subject to substantial geographic stratification. In the case of skin, individuals tend to have lighter pigmentation with increasing distance from the equator. By contrast, the majority of variation in human eye and hair color is found among individuals of European ancestry, with most other human populations fixed for brown eyes and black hair.,similarity:Belongs to the sodium/potassium/calcium exchanger family. SLC24A subfamily.,tissue specifici



Background

This gene encodes a member of the potassium-dependent sodium/calcium exchanger protein family. Alternative splicing results in multiple transcript variants.[provided by RefSeq, Jul 2010],

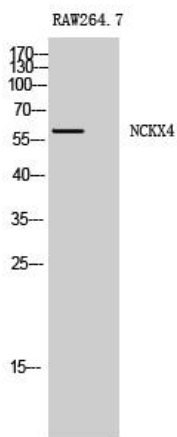
matters needing attention

Avoid repeated freezing and thawing!

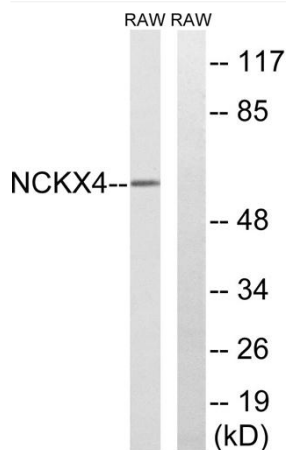
Usage suggestions

This product can be used in immunological reaction related experiments. For more information, please consult technical personnel.

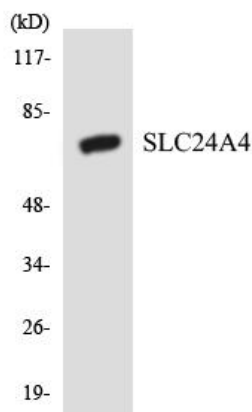
Products Images



Western Blot analysis of RAW264.7 cells using NCKX4 Polyclonal Antibody



Western blot analysis of lysates from RAW264.7 cells, using SLC24A4 Antibody. The lane on the right is blocked with the synthesized peptide.



Western blot analysis of the lysates from HeLa cells using SLC24A4 antibody.